

Reading the notes on the staff

The Notes on the lines are E G B D F

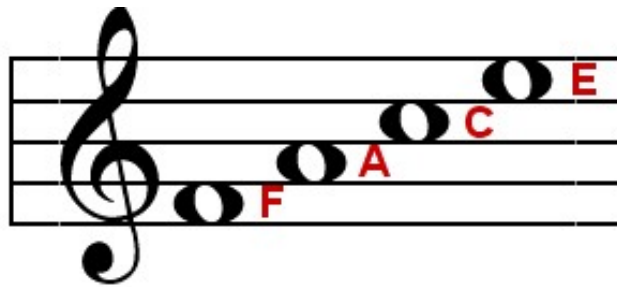
I like to use the rhyme:



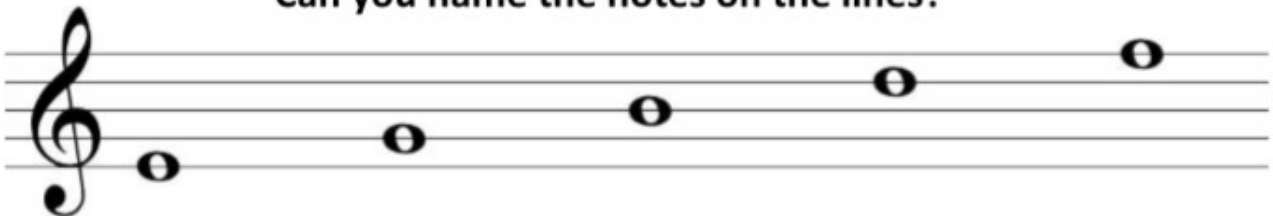
Create your own rhyme for the lines:

For the space's always remember:

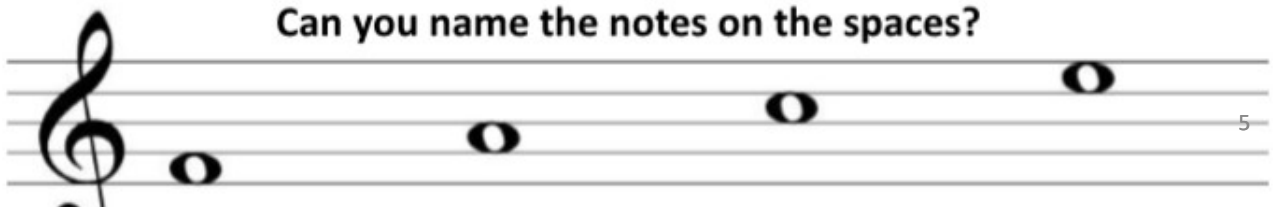
Space sounds like F.A.C.E



Can you name the notes on the lines?

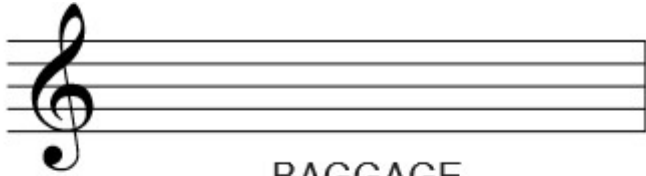


Can you name the notes on the spaces?



Musical Spelling Bee

Spell each of the following words using music:



BAGGAGE



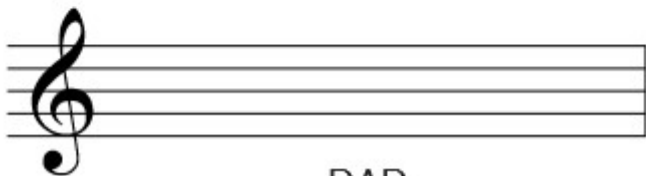
FACE



FADED



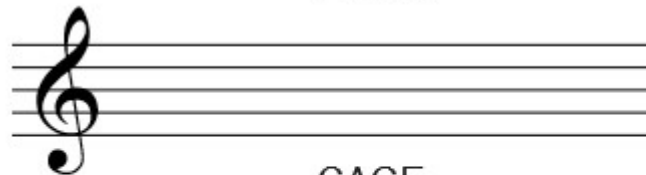
BEE



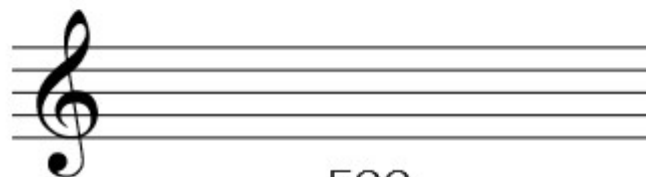
DAD



EDGE



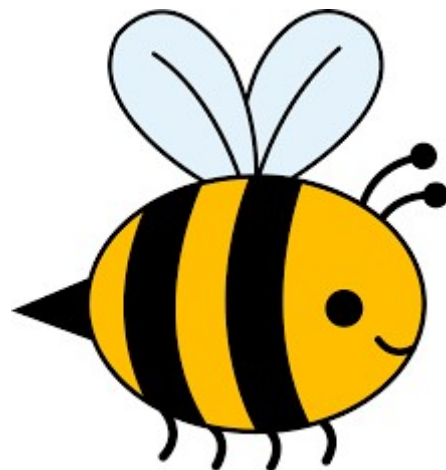
CAGE



EGG







CABBAGE



Note Values:

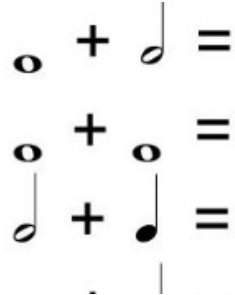
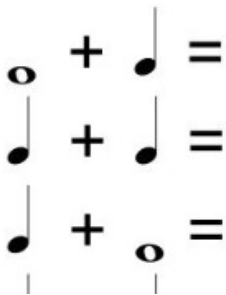
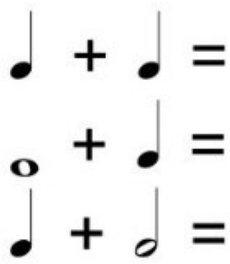
Name each of the notes below:

a)  b)  c)  d) 

| Note Name: | Symbol: | Duration: |
|----------------|---------|-----------|
| Crochet | | |
| Quaver | | |
| Dotted Crochet | | |
| Minim | | |
| Dotted Minim | | |
| Semibreve | | |

Solve each of the following:

| | | |
|--|--|--|
| | | |
| | | |



Below you will see a group of notes... put them in order from shortest to longest. The First one has been done for you.



Answered Example:














Key Signatures

Draw the following:

C major

A set of four horizontal lines for handwriting practice, consisting of a top line, two middle lines, and a bottom line.

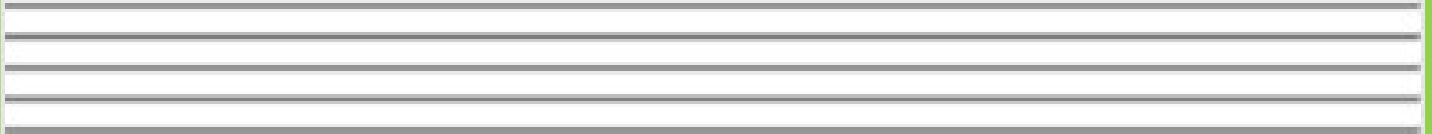
D major

A set of four horizontal lines for handwriting practice, consisting of a top line, two middle lines, and a bottom line.

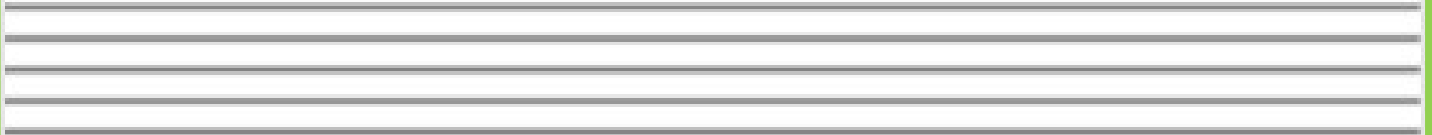
G major

A set of four horizontal lines for handwriting practice, consisting of a top line, two middle lines, and a bottom line.

F major

A set of four horizontal lines for handwriting practice, consisting of a top line, two middle lines, and a bottom line.

B \flat major

A set of four horizontal lines for handwriting practice, consisting of a top line, two middle lines, and a bottom line.