

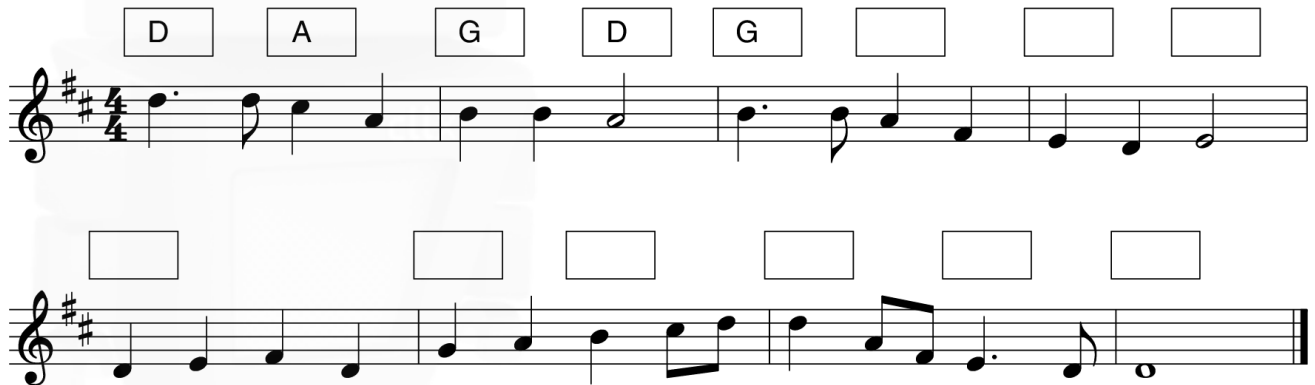
C BACKING CHORDS

Study the following tune. It is intended for chordal accompaniment.

Bless this House

MAY H BRAHE

At a walking pace



The first five symbols above the music are given.

Now fill in the other nine boxes as follows:

- 1 Select a suitable symbol as a backing chord in each box.
- 2 Do NOT use Roman numerals (for example, I, ii, IV, etc.)
- 3 Do NOT have the same symbol twice in succession.

(5 × 9 = 45)

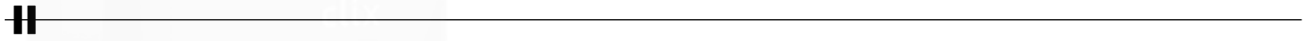
C AN ANSWERING PHRASE

Study this four-bar opening phrase.

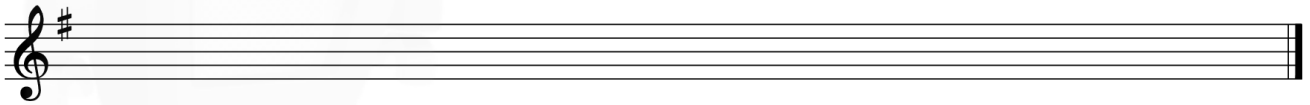
Waltz time (*Tempo di valse*)



Rhythm



Melody



Now compose an **answering** phrase above to complete this melody.
Make your answering phrase **different** from the opening phrase, as follows:

- 1 Write a FOUR-BAR rhythm pattern. (27)
- 2 Compose a MELODY in the key of G for this rhythm. (4)
- 3 End on the KEYNOTE, that is, DOH. (4)
- 4 Add suitable PHRASING. (4)

