

2014

B A PHRASE SET TO A GIVEN OPENING

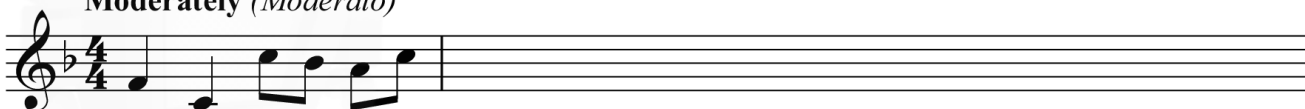
Study this opening.

Rhythm



Melody

Moderately (*Moderato*)



Now complete this melody above as follows:

- 1 Add THREE bars to the given rhythm pattern.
- 2 Compose a MELODY in the key of F for this rhythm. (27)
- 3 End on the KEYNOTE, that is, DOH. (4)
- 4 Add suitable PHRASING. (4)

2011

B A PHRASE SET TO A GIVEN OPENING

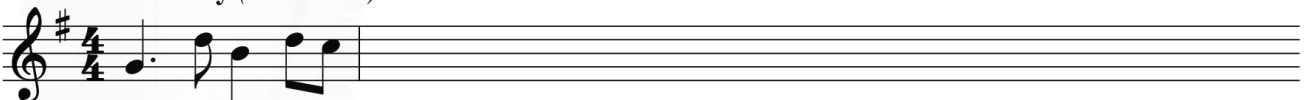
Study this opening.

Rhythm



Melody

Moderately (*Moderato*)



Now complete this melody above as follows:

- 1 Add THREE bars to the given rhythm pattern.
- 2 Compose a MELODY in the key of G for this rhythm. (27)
- 3 End on the KEYNOTE, that is, DOH. (4)
- 4 Add suitable PHRASING. (4)

