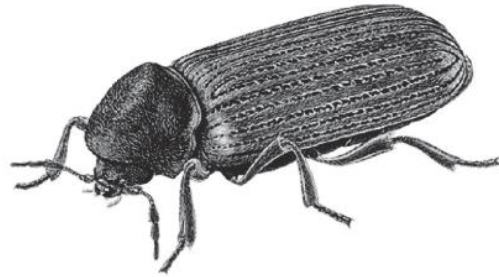


Ordinary Level - 2016

3. The diagram on the right shows a magnified image of the common furniture beetle.

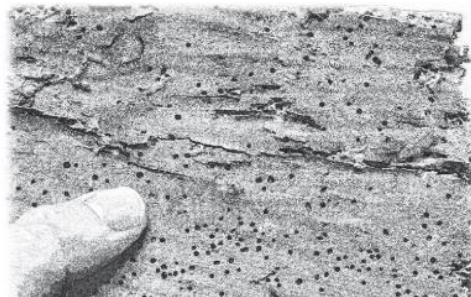


(i) Describe, using notes and *neat freehand sketches*, the life cycle of the common furniture beetle.

(ii) Wood that has been damaged by the presence of furniture beetles usually has numerous small holes on its surface, as shown in the diagram below.

Describe, using notes and *neat freehand sketches*, how this occurs.

(iii) Explain how to treat a piece of wood that has been attacked by woodworm.



Higher Level - 2016

3. The diagrams show two methods of timber conversion.

(i) Identify the conversion methods and give **TWO** advantages and **TWO** disadvantages of each method.

(ii) Name, and describe using *a neat freehand sketch*, **ONE** other timber conversion method.

(iii) Two types of timber decay are wet rot and dry rot. Describe the conditions necessary for **dry rot** to occur.

(iv) Name **TWO** types of wood preservative and describe **THREE** methods of applying preservatives to wood.

